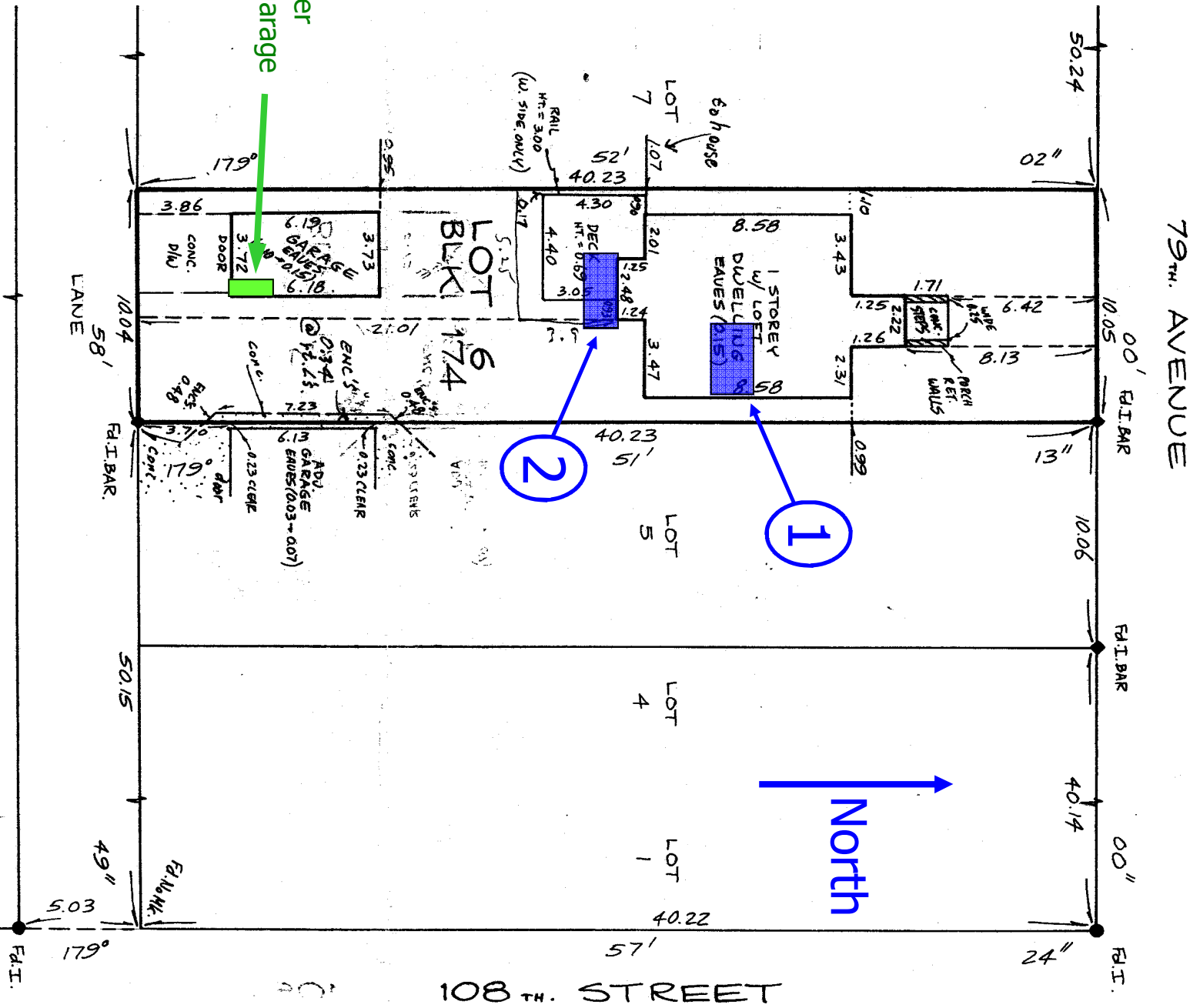


Site Plan Updated 2 Oct 2010

Showing two locations for solar panels.

1. Solar panels attached to roof of house (3 panels)
2. Panels attached to 2 racks on the south side of the house dormer (4 panels)

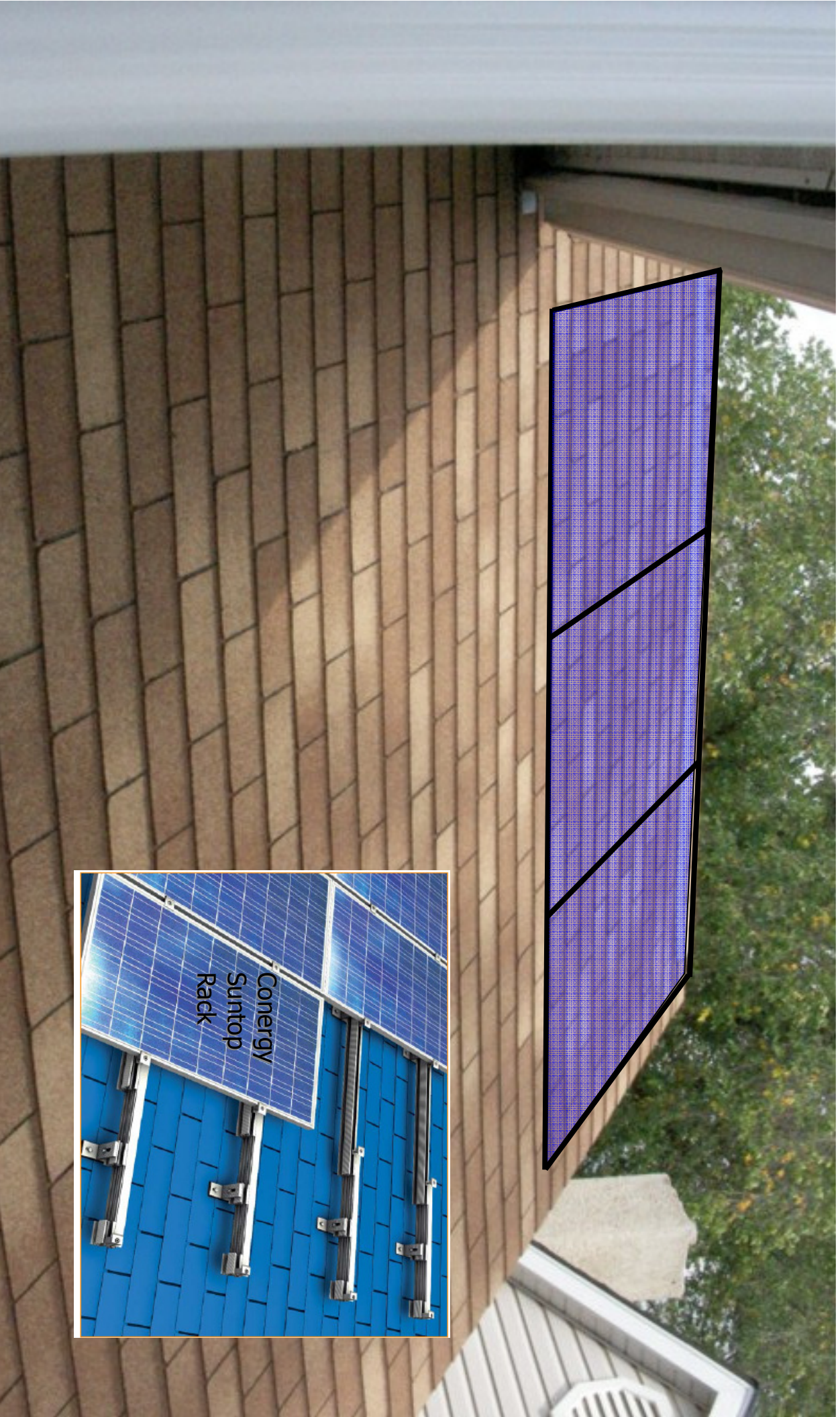


Main Power
Panel in garage



1

General arrangement of solar panels on roof.
Three panels mounted to the roof.
Roof was rebuilt in 2005.



1

Close up of proposed location for panels on roof.
Each panel is 64.5" high and 38.75" wide. Overall width is 116.25".
Will be attached using a "Conergy Suntop Rack" (see inset picture and attached literature).
Panels will add a negligible amount of height to the roof.

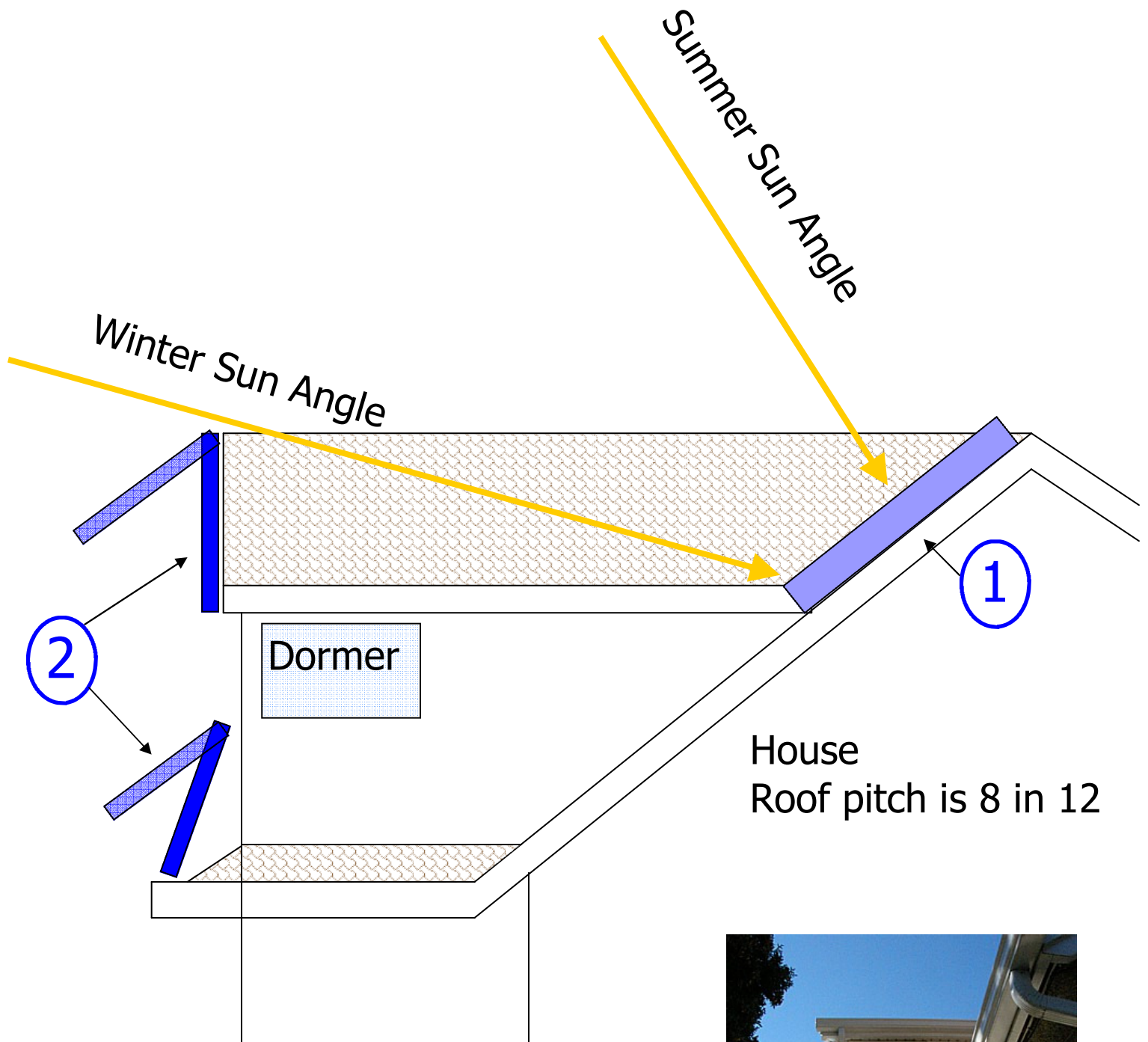
2

Revised location for solar panels. Face of each rack is 10.8' (3.3 m) wide and 3.2' (1.0 m) high.

Racks will be able to tip seasonally to match sun angle.

Top solar panels provide seasonal shading for dormer windows.





House
Roof pitch is 8 in 12

Side view of house from the east.

- 1. Roof mount panels
- 2. Two small racks on dormer at left

Both dormer racks tip out in summer

NOT TO SCALE

