

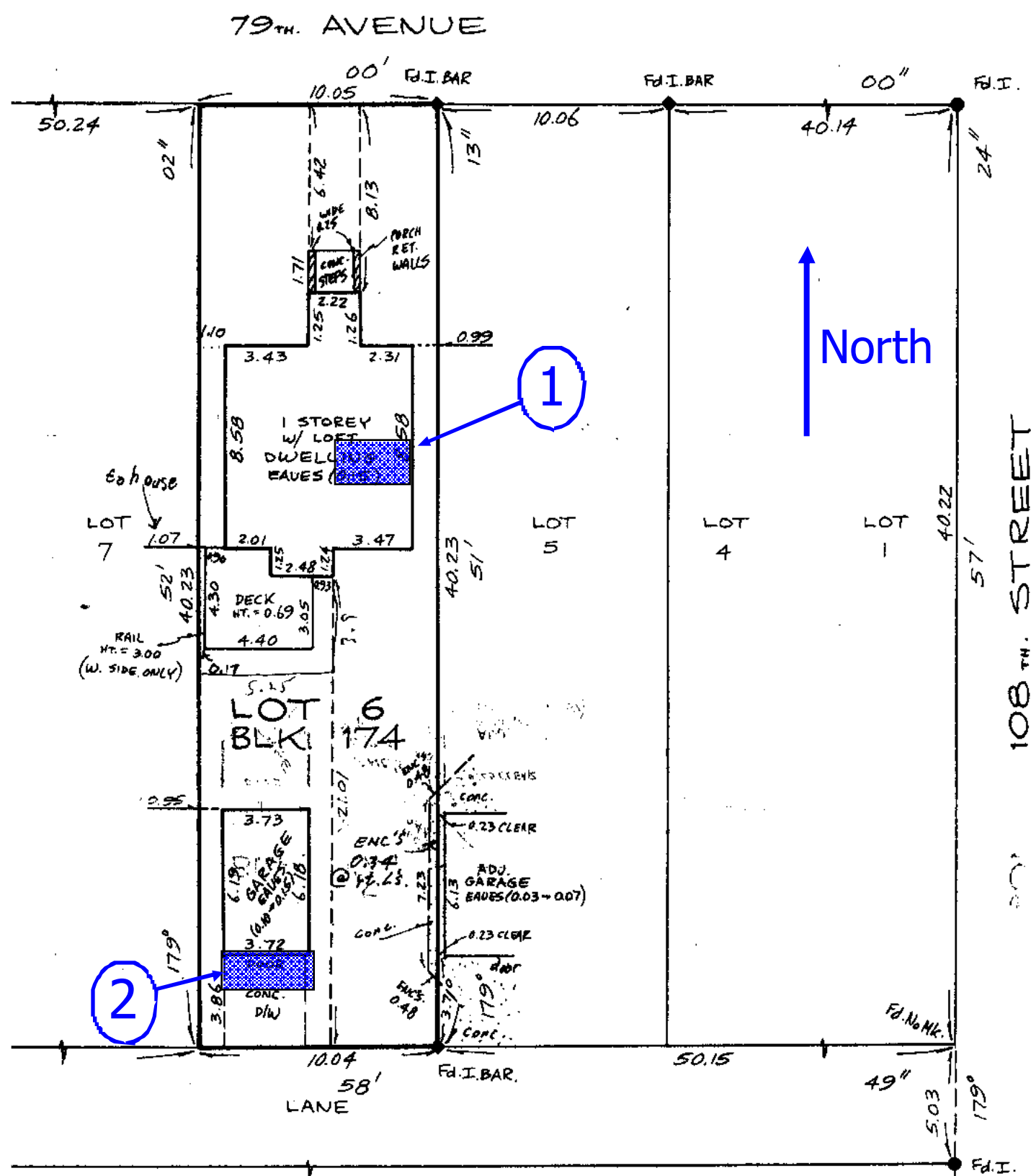
Site Plan

Updated

25 Sep 2010

Showing two locations for solar panels.

1. Solar panels attached to roof of house (3 panels)
2. Panels attached to rack on the back of the garage (4 panels)





1

General arrangement of solar panels on roof.
Three panels mounted to the roof.
Roof was rebuilt in 2005.



1

Close up of proposed location for panels on roof.
Each panel is 64.5" high and 38.75" wide. Overall width is 116.25".
Will be attached using a "Conergy Suntop Rack" (see inset picture and attached literature).
Panels will add a negligible amount of height to the roof.



Lowered to
14 ft (4.27 m)

Iron Bar

2

Proposed location for solar panels. Face of rack is 5.4' (1.6 m) and **13.1' (4.0 m)** wide. Panels will be mounted to a rack on the front of the posts. Mounting and rack will be engineered. Garage is 3.7 m in from property line. Height to top of solar panels will be exactly **14 ft (4.27 m) measured from concrete at garage door.** Iron bar (property line) is shown by the arrow at the corner of yellow quick square.

②

Solar rack designed to swing out at bottom.
- May add swing out feature now or later.
- Helps align panels with sun seasonally.

Rack will project 1.4 m plus thickness of rack.

Top of rack is about **1.2 m (4 ft)** below electrical service entry.

